

Level Block

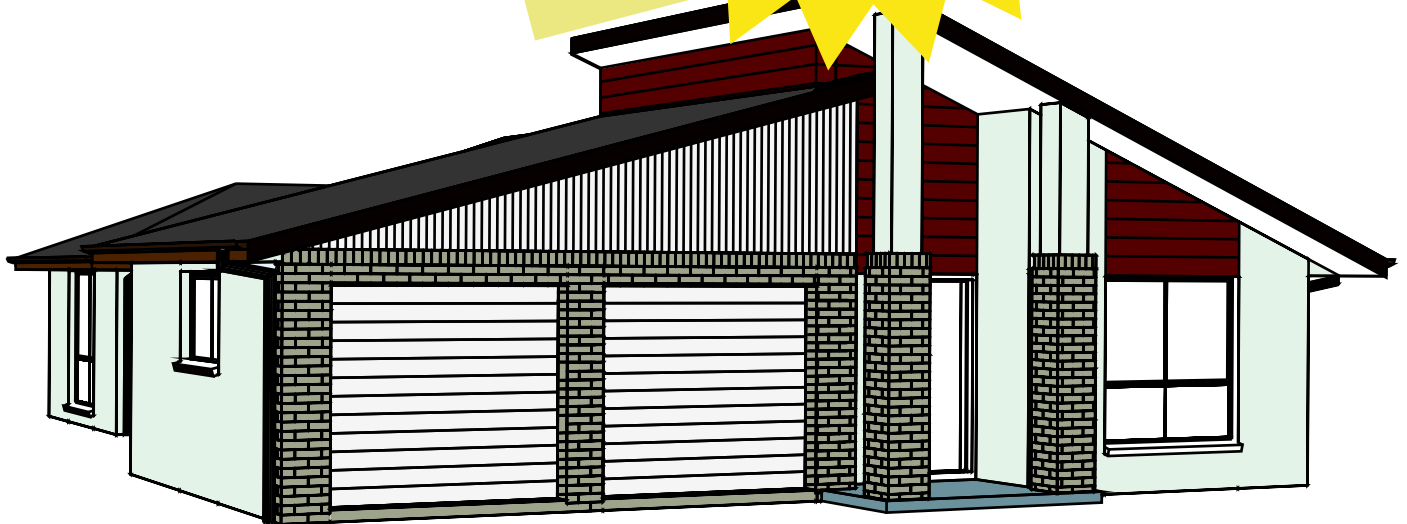
Kennedy 3

Façade - Modern

Master Builders Association Awards
WINNER - 2008
Custom Built Home \$350,000-\$500,000
Kitchen of the Year Over \$30,000

Housing Industry Association
WINNER - 2008
Custom Built Home Under \$800,000

Finalist - 2008
Custom Built Home Under \$800,000
Custom Built Home Under \$500,000
Bathroom Project Under \$25,000



Artists Impression



The Kennedy 3 has been designed to accommodate narrow blocks of land with a drive thru garage. It offers a modern kitchen overlooking family and meals area and separate lounge for relaxation. Width - 12.1m, Length - 18.77.

- * 3 bedrooms with built in robes (walk in robe to the master bedroom)
- * 1 ensuite, 1 bathroom with separate WC

- * modern kitchen, meals and family rooms
- * double garage with internal and rear access
- * 3 built in linens

Floor Area: 142.058 sq.m (15.29 sq) | Porch: 3.282 sq.m (0.35 sq) | Garage: 37.951 sq.m (4.08 sq) | Total: 183.291 sq.m (19.729 sq)